

Turas Care Management (aka the Safety Huddle Tool)

COVID-19 response in Scottish care homes

Core Principles

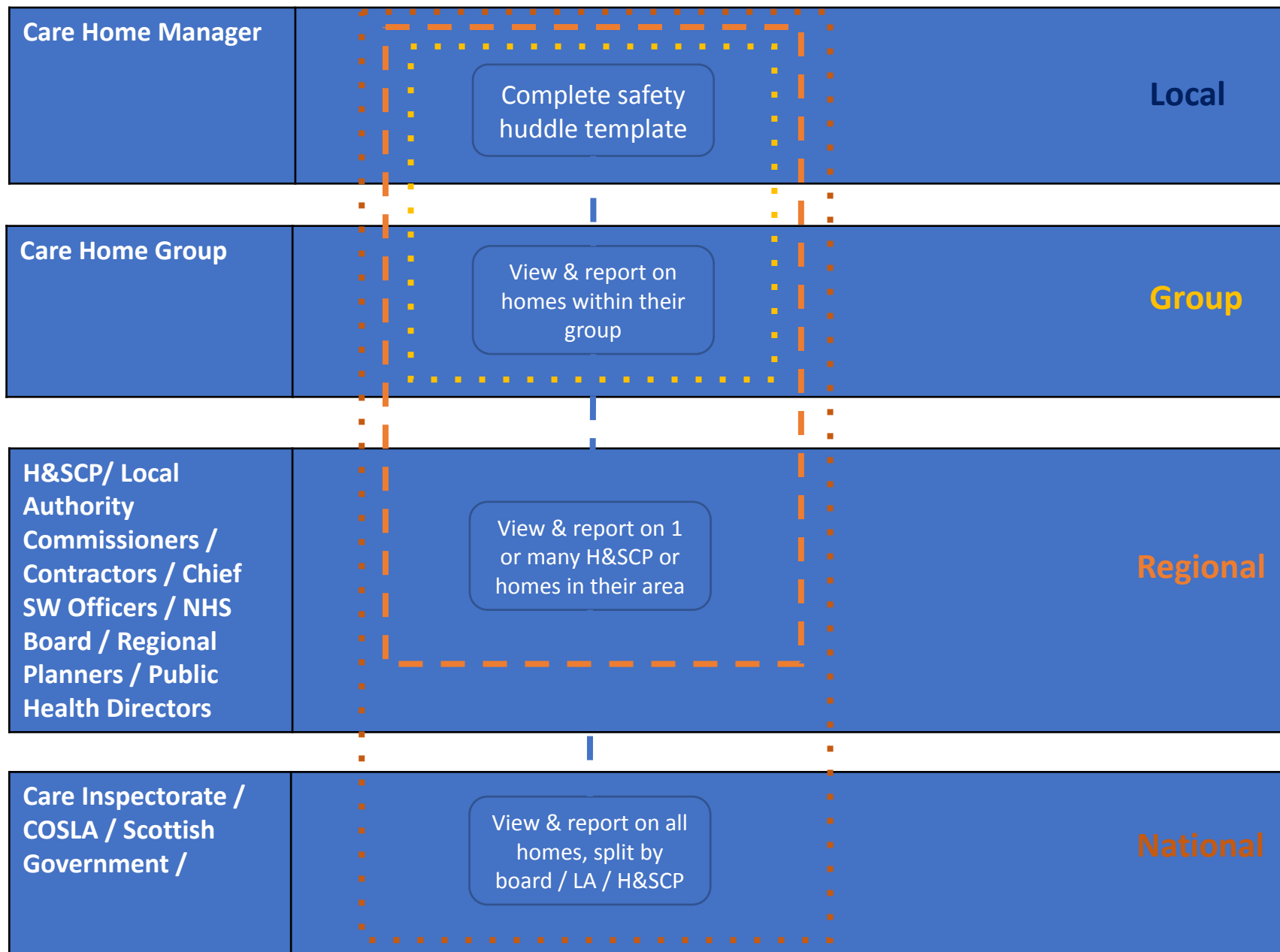
- Tool designed with the sector for the sector
- Safety huddle – methodology used to help collate data
- One data capture for multiple purposes
- Focus on outbreak management and contributory factors
- Data repository/escalation situational awareness tool
- Future proofed and easy data entry

What is a safety huddle?

They are short multidisciplinary/team meeting held at a predictable time and place daily.

Effective safety huddles can:

- Enhance team work through communication and co-operative problem solving
- Support a shared understanding of the focus and priorities of the day
- Support situational awareness and safety concerns
- Supports prioritisation of care with a focus on safety
- Enables early escalation and intervention. Captures mitigation actions.
- Enable trend monitoring and support improvements in care



User Roles

Date Usage and Purpose – During COVID-19 Pandemic

Care Home/Care Home Provider	<ul style="list-style-type: none"> • Input data • Review local reports/wider care home group reports • Situational awareness, Care Prioritisation and Escalation of safety concerns • Trend monitoring, resilience planning • Quality Improvement • Reduction in duplication of reporting
Oversight Groups in NHS Boards and Health and Social Care Partnerships	<ul style="list-style-type: none"> • Over view of care home KPI reports and compliance for care homes in their area • Support with Mutual aid/PPE and IPC compliance when required
Commissioning/Contract Monitoring	<ul style="list-style-type: none"> • Captures information requested by commissioners of services
Incident Management Teams	<ul style="list-style-type: none"> • Supports escalation to Health Protection Teams • Supports outbreak management
The Care Inspectorate	<ul style="list-style-type: none"> • Captures information which care inspectorate had asked for e.g. staffing/outbreak etc as part of pandemic response and inspection
Public Health Scotland	<ul style="list-style-type: none"> • Allows overview of outbreaks Nationally vs local prevalence
The Scottish Government	<ul style="list-style-type: none"> • National Pandemic overview of all data fields/compliance • National Overview of outbreaks, Escalation • National Overview of staff and resident testing for official data publication • National Overview uptake of flu vaccine and visiting

NES delivered technology

- Built entirely in-house by NHS Education for Scotland Technology Service teams.
- Built on the NES Turas platform – Public Cloud Based (MS Azure), accessible anywhere, on mobile or desktop devices.
- Users authenticate using e-mail address identity service (MS B2B).
- Agile development methodology – working with stakeholders/users to iterate and respond to changing needs and demands (from August to December >20 deployments of code – little & often).

Care Home Manager View

TURAS | Care Management COVID-19 Response Dashboard Applications Colin Carehome

Home Reports Help [Have a suggestion that would make TCM better?](#)

This is test data [View Care Home Details](#)

Staff Screening - Deadline
You have not created your Staff Screening form for last week. Please complete and submit this form before the reporting deadline (usually around 5pm each Monday).
[Click here to create and submit last week's Staff Screening form.](#)

Erskine Glasgow Care Home Current Outbreak Status: No Outbreak

30 | No. of care home places **29** | No. of residents **0** | No. of positive residents **0** | No. of COVID-19 related deaths (last 24 hrs)

Data recorded on 20/11/2020

Safety Huddles Staff Screening Seasonal Flu

Safety Huddles [Create Safety Huddle](#)

Filter these safety huddles by status etc.

Date	Status	Activated outbreak HPT	HPT escalation	Care Inspectorate escalation	Essential Visiting	Adequate PPE	Can comply with IPC measures	Dependency & Complexity escalation	Staffing escalation	Actions
20/11/2020	Reported	No	Yes	Yes		Yes	Yes	Yes	Risk Mitigated	Actions

Care Home Manager View

This is test data

Erskine Glasgow Care Home

View Care Home Details

Erskine Glasgow Care Home

Current Outbreak Status: No Outbreak

20 | No. of care home places

15 | No. of residents

0 | No. of positive residents

1 | No. of COVID-19 related deaths (last 24 hrs)

Data recorded on 09/11/2022

Safety Huddles

Safety Huddles

Create Safety Huddle

Filter these safety huddles by status etc.

Date	Status	Activated outbreak HPT	HPT escalation	Care Inspectorate escalation	Indoor Visiting	Essential Visiting	Adequate PPE	Can comply with IPC measures	Dependency & Complexity escalation	Staffing escalation	Actions
09/11/2022	Complete	No	-	-	Yes	Yes	No	No	No	No	Actions
07/11/2022	Complete	No	-	-	Yes	Yes	Yes	Yes	No	Risk Mitigated	Actions

Care Home Manager View

Create Safety Huddle

Erskine Glasgow Care Home > Create Safety Huddle

[< Go Back](#)

Create Safety Huddle

Required fields are marked with an asterisk *

Local Info	HPT	Visiting	IPC Measures	Dependency & Complexity	Staff Absences
------------	-----	----------	--------------	-------------------------	----------------

Local Information

Date (dd/mm/yyyy) *

10/11/2022 

Total number of residents *

i This includes residents who are in hospital or out of the home for overnight stays on 10/Nov/2022.

Number of available places today *

i This is a high level figure to support oversight teams understand the available places within the care home at time of SHT submission.
The available places will exclude:

- Places allocated to new admission
- Places that are not available due to refurbishment of staffing concerns or other reasons
- If home is closed to admissions (for example due to an outbreak or there is a moratorium on admissions) please enter 0

Close without Saving

Save as Draft

Next section: HPT →

This is test data

KPI Dashboard

Designed to focus on a more regional and national view of the KPIs

[View KPI Dashboard](#)

Registrations and Compliance Report

Registration and compliance metrics for Safety Huddle and Staff Screening Returns

[View Registrations and Compliance Report](#)

Archived Staff and Resident Screening Dashboard

Weekly Staff Screening and Resident Screening data captured on Turas Care Management

[View Archived Staff and Resident Screening Dashboard](#)

Care Home Dashboard

Providing a detailed analysis of Safety Huddle Returns for each Care Home

[View Care Home Dashboard](#)

Lateral Flow Testing Report

Report showing the number of Lateral Flow Tests (LFT) for COVID-19 being performed for Care Home Staff and Visitors.

[View Lateral Flow Testing Report](#)

C-19 & Flu Vaccine Reports

Report showing the uptake by residents and staff in Care Homes of COVID-19 & Flu vaccinations, from 04/10/2021 onwards

[View C-19 & Flu Vaccine Reports](#)

Archived Seasonal Flu Vaccine Report

Summary of 2020/21 Seasonal Flu Vaccine Returns

[View Archived Seasonal Flu Vaccine Report](#)

Archived COVID-19 Vaccine Report

This contains C-19 vaccine programme data until 04/10/21, current data can be found on the tile named 'C-19 & Flu Vaccine Reports'

[View Archived COVID-19 Vaccine Report](#)

Occupancy Rate

579

Safety Huddles Submitted Today

1031

Available Places

4.7%

% Available

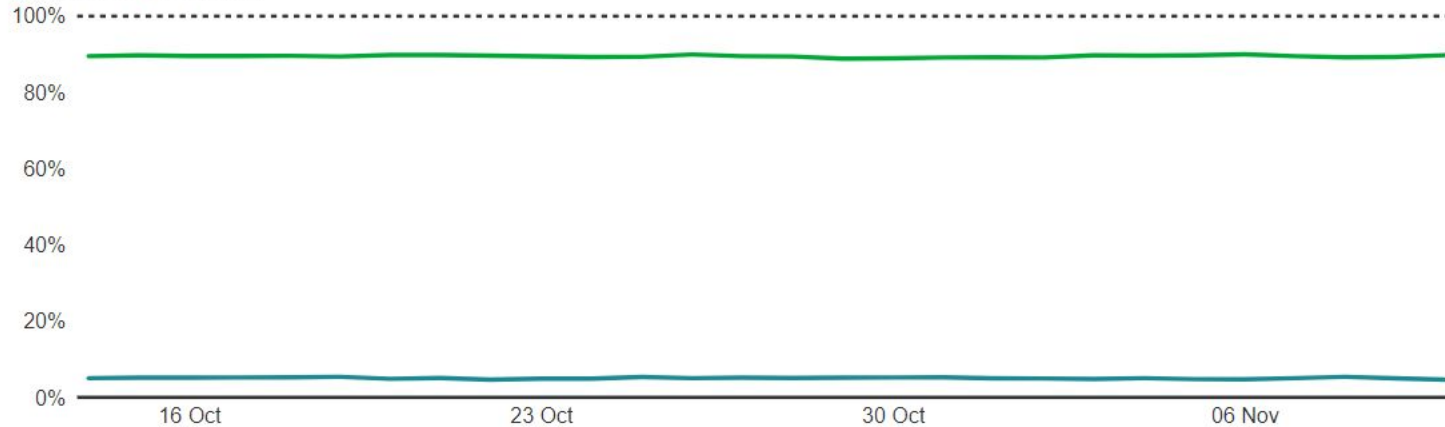
19,561

Residents

89.8%

% Occupancy

● % of Occupancy ● % of Availability



Outbreak Status

20

New COVID-19 symptoms

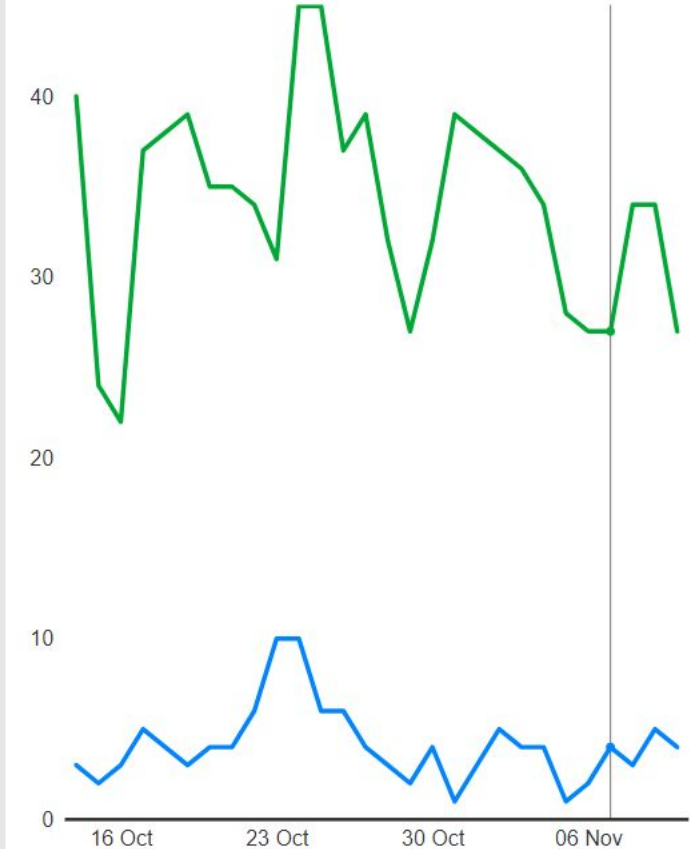
4

Awaiting Confirmation

27

Outbreak Confirmed

● Awaiting Confirmation ● Outbreak Confirmed



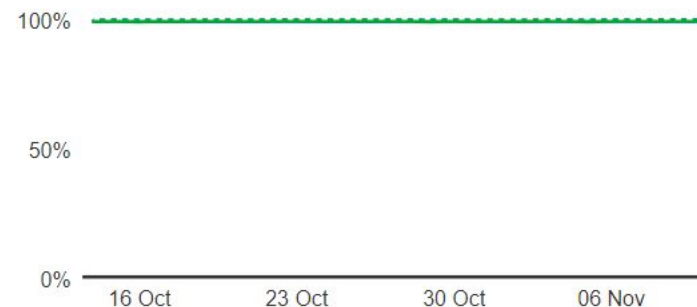
Infection Control

Adequate PPE

Can Comply With IPC



● % With Adequate PPE ● % Can Comply With IPC



Escalation Profile

Care Home Hierarchy

All

Escalation Score >1

All

Safety Huddle Date

Last 6 Months

19/04/2021 11:06

Last

Safety Huddle Date	NHS Board	Health and Social Care Partnership	Care Home Name	Escalation Score	Outbreak Status	Escalated HPT	Dependency Escalation	With Adequate PPE	Can Comply with IPC Measures	Escalated Care Inspectorate	Staff Escalation	Essential Visiting	Indoor Visiting	Sup Staff
09/04/2021				2	No Outbreak		No	Yes	Yes		No	No	No	
08/04/2021				1	Awaiting Confirmation		No	No	Yes		No		Yes	
07/04/2021				5	Awaiting Confirmation	Yes	Yes	No	Yes	Yes	Yes		Yes	
06/04/2021				3	Awaiting Confirmation	Yes	No	Yes	No	Yes	No		Yes	
30/03/2021				1	No Outbreak		No	Yes	No		Risk Mitigated		Yes	Sup Staff
23/03/2021				5	Outbreak Declared Over	Yes	Yes	No	Yes	Yes	Yes		Yes	
22/03/2021				0	Outbreak Declared Over		No	Yes	Yes		No		Yes	

Care Home Manager dashboards – developed with and for the Care Homes

Early Warning Flags - Latest Safety Huddle

Latest Safety Huddle Submitted: 25/11/2020

This tab highlights key numbers for the selected Care Homes latest Safety Huddle.

Outbreak and Escalation

Confirmed
Outbreak

Outbreak
Status

Yes

Escalated to
HPT

Dependency
Escalation

Escalated Care
Inspectorate

Essential Visiting

No

Adequate
PPE

No

Can Comply
with IPC

Risk Mitigated

Staff
Escalation

COVID-19 cases

0

Resident(s) with
New Symptoms

0

Staff with New
Symptoms

5

Resident(s) Tested
Positive

5

COVID-19
Transfer(s)

5

COVID-19
Death(s)

Staffing level

63

Effective Care

63

Available inc.
Supplementary

Care Home Baseline Figures

91.4%

Latest Occupancy
Rate

8

Non COVID-19
Transfers (Month)

3

Non COVID-19
Deaths this Month

91.4%

Average
Occupancy Rate

7

Average Non COVID-
19 Transfers (Month)

6

Average Non COVID-
19 Deaths (Month)



Developed by NES Digital.



Thank you